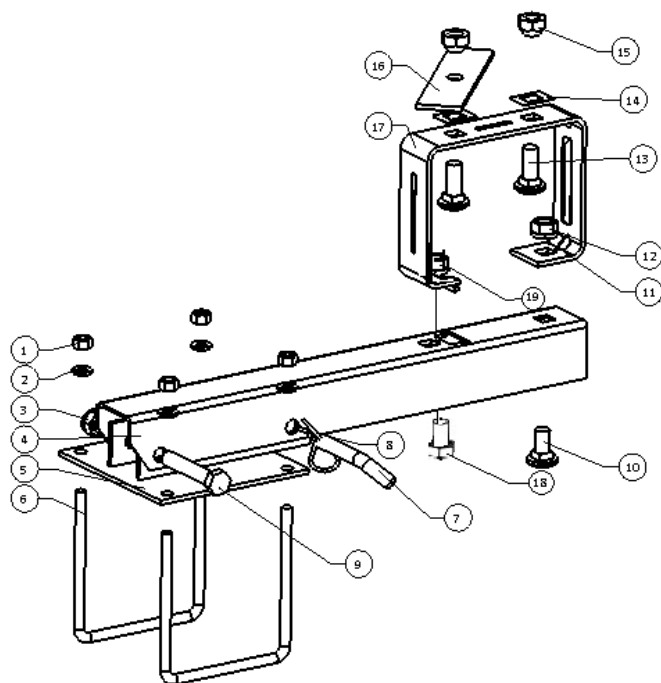




## TIRE CARRIER INSTALLATION INSTRUCTIONS

Use retaining bolt with clevis pin for fold-out spare tire carrier or use the solid retaining bolt for a rigid spare tire carrier. Bolts to 4" RV box bumpers. Powder coated and rust resistant for longer life. Fits 5, 6 & 8 lug Kelsey-Hayes type wheels and Fayette type travel trailer wheels. Weight limit 60 pounds. Lifetime warranty.

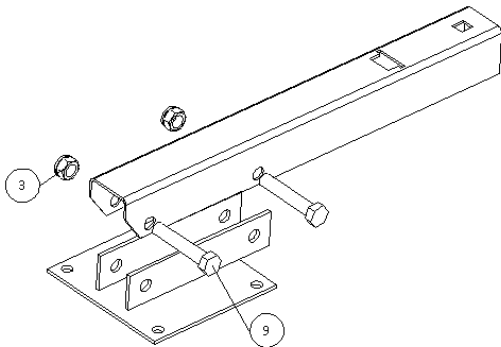


15-854695 Hardware Bag Items (\*items)

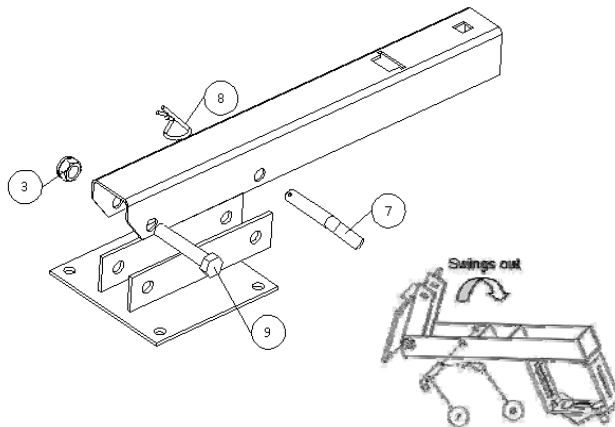
ILL #	PART #	DESCRIPTION	QTY
1	17-113105*	NUT - 3/8"-16 HEX ZINC	4
2	17-113107*	WASHER - 3/8" LOCK	4
3	35-001025	LOCK NUT- 1/2"-14	1
4	15-854616	COLUMN	1
5	15-854617	BASE	1
6	15-114342*	U-BOLT - 3/8"-16 x 4-3/4"	2
7	15-114347*	CLEVIS PIN	1
8	15-114348*	COTTER HAIRPIN	1
9	15-114396	HEX BOLT-1/2"-14 x 2-3/4"	1
10	15-114278*	CARRIAGE BOLT 1/2"-20 x 1"	1
11	17-111024*	LOCK WASHER - 1/2"	1
12	15-114279*	HEX NUT - 1/2"-20	2
13	15-114344*	CARRIAGE BOLT 1/2"-20 x 1-1/2"	2
14	15-114343*	SPRING CLIP	2
15	41-020095*	LUG NUT 1/2"-20	2
16	15-114345*	LUG PLATE	1
17	15-854615	CARRIER LOOP	1
18	41-010309	BOLT-3/8-16X1-1 1/4 HEX	1
19	41-020059	NUT-3/8-16 LOCK	1

### ASSEMBLE THE BASE FRAME

For **RIGID CARRIER**, add 2 hex bolts through the column and base, torque nuts to 30 ft lbs.

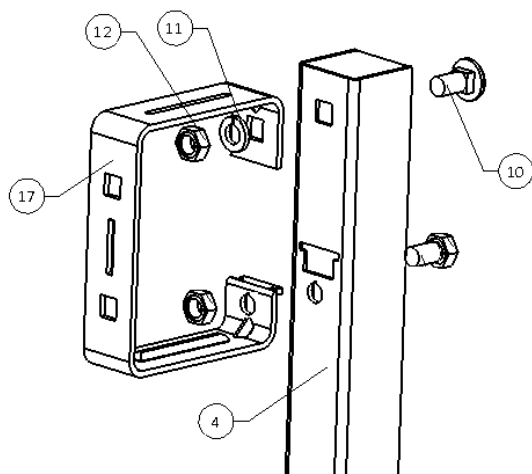


For **FOLD-OUT CARRIER**, add hex bolt through the bottom holes of the column and base (torque nut to 30 ft lbs), add clevis pin through top holes of column and base

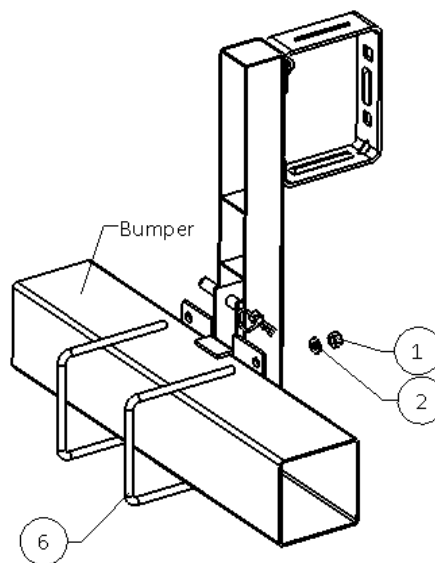


**ASSEMBLE THE CARRIER LOOP**

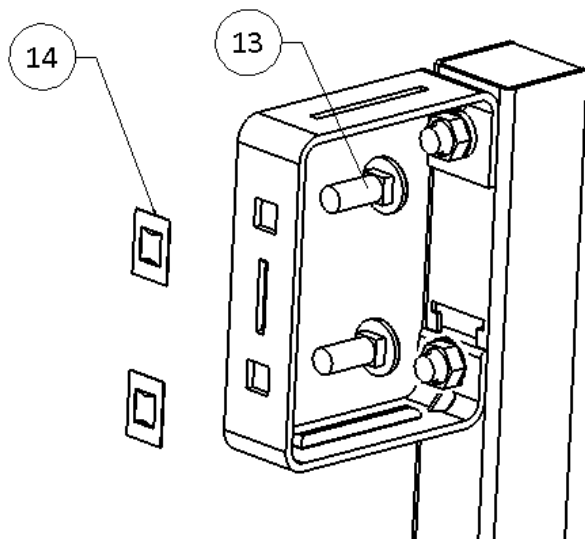
Place carrier loop, as in picture, inserting bottom tab into carrier column then attaching the top of the carrier loop to the column with the 1" carriage bolt, lock washer and hex nut. Install the 1 1/4" hex bolt through the bottom part of the carrier loop and fasten using the 3/8-16 lock nut. Torque nuts to 30 ft lbs.

**ATTACHING TO THE TRAILER BUMPER**

Place the tire carrier assembly on the trailer rear bumper, attach with the 2- 3/8" U bolts, 4- 3/8" washers and 4- 3/8"-16 nuts. Torque nuts to 30 ft lbs.

**MOUNTING THE SPARE TIRE**

Add both 1 1/2" carriage bolts to the loop as shown below. Force the spring clips onto each the threads of the carriage bolts. This will hold the carriage bolts in place.



Mount the tire rim onto the top carriage bolt, secure with a lug nut. The bottom carriage bolt will protrude through the large hole in the rim. Place the lug plate over carriage bolt and secure with the second lug nut. Torque nut to 30 ft lbs.

