



ELIMINATOR II STS INSTALLATION MANUAL

(PN 48-979081)

Patent: 8,950,777 B1

The Eliminator II STS is an automatic stabilizer for your scissor jacks. Once it is installed there are no adjustments required for normal use of the system.

Tool List: Basic hand tools, Allen Wrenches, Clamp, and Electric Drill

Orientation of Side-To-Side (STS) unit:

The STS unit is a universal fit for the front or rear ends of an RV travel trailer.

For example, Exhibit 1, p. 3, shows an assembled and installed STS unit. The view is for both front and rear installations. If there is an obstruction preventing installation on either the front or rear, the STS unit can be installed on the opposite end of the RV trailer. There are two assemblies that comprise a complete STS unit, the Offset Upper Link/Lower Link Assembly (#1, Exhibit 1, p. 3) and the Cross Tube Assembly (#2, Exhibit 1, p. 3).

Assembly:

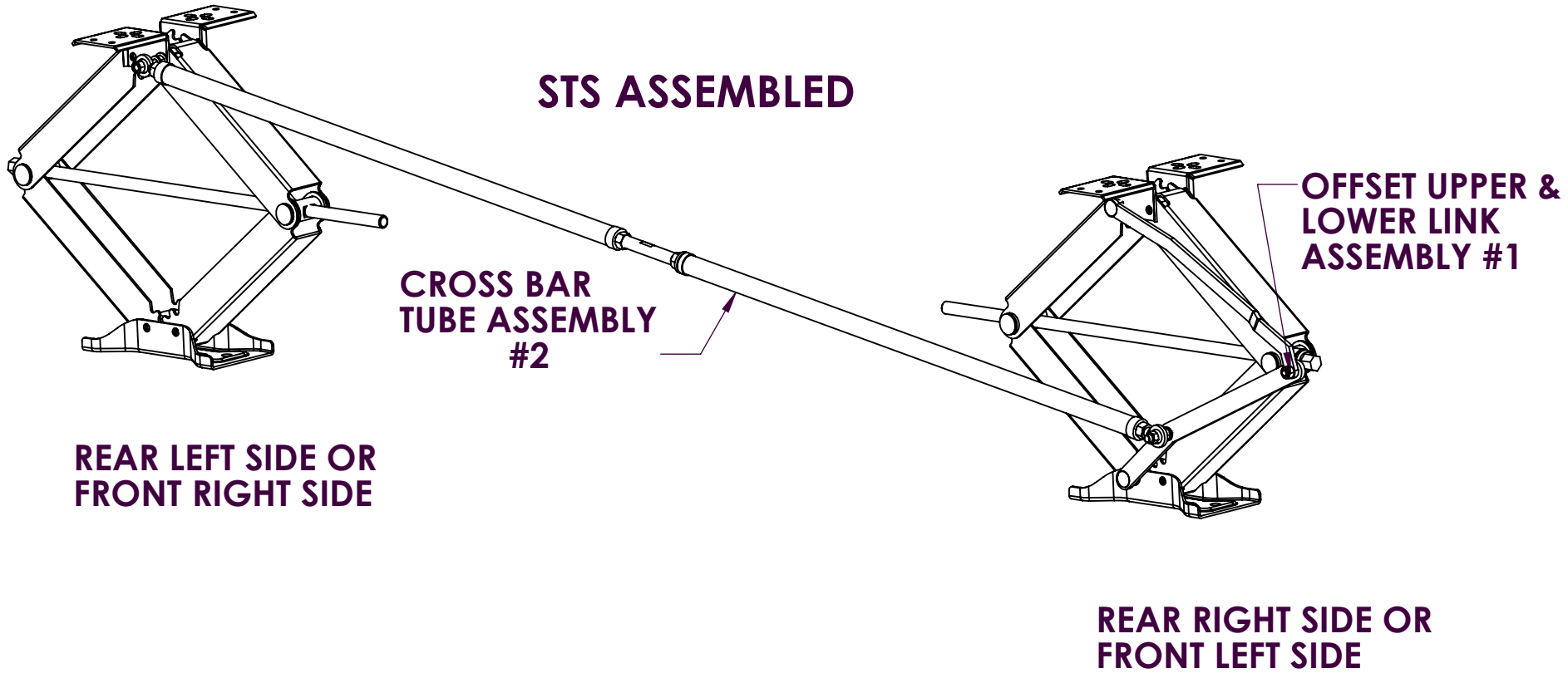
1. Open the carton and lay out the components and check the STS Parts List on p. 2.
2. Assemble Offset Upper Link (#1, Exhibit 2, p. 4) to the Lower Link (#2, Exhibit 2, p. 4) according to the Exhibit 2, p. 4. Tighten 5/16"-18 x 1" Flat Head Screw (#5, Exhibit 2, p. 4) until it is snug, DO NOT OVER TIGHTEN SINCE THESE PARTS NEED TO ROTATE. See STS Links Assembly Exhibit 3, p. 5.
3. Extend the rear RT side or front left side scissor jack to touch the ground. This will aid in removing and installing parts.
4. Remove one pivot bolt from the scissor jack top mounting plate inside hole and one pivot bolt from the scissor jack bottom foot pad inside hole. See Exhibit 4, p. 6. Note you may be removing one of the bolts that were installed for the Front-To-Back unit (FTB). This is OK.
5. Install the Offset Upper Link/Lower Link Assembly (#1, Exhibit 1, p. 3) to the scissor jack according to Exhibit 4, p. 6. Note: It is easier to assemble, if the top and bottom bolts (#3, Exhibit 2, p. 4) are inserted at the same time. Next, install the washers (#11, Exhibit 4, p. 6) and nuts (#12, Exhibit 4, p. 6) to a snug fit. Do not over tighten to allow the assembly to move freely when the scissor jack is extended/retracted.
6. Next, on the rear LT side or front RT side scissor jack, remove the scissor jack top mounting plate inside pivot bolt. See Exhibit #5, p. 7. Insert the 3/8" x 4" bolt (#17, Exhibit 5, p.7) through the interior hole of the scissor jack top mounting plate. Install two washers (#11, Exhibit 5, p. 7) and nut (#8, Exhibit 5, p. 7) to a snug fit.
7. Retract both scissor jacks all the way. Write down the measurement from the outside end of the bolt (#17, Exhibit 5, p. 7) to the bolt (#9, Detail A, Exhibit 5, p. 7) on the installed Offset Upper Link/Lower Link Assembly (Detail A, Exhibit 5, p. 7.)
8. Assemble the Cross Tubes (Detail D, Exhibit 5, p. 7). The Threaded Rod (#15) has a RT hand thread on one end and a LT hand thread on the other end. Install the jam nuts (#18 and #19, Detail D, Exhibit 5, p. 7) onto the Threaded Rod (#15, Detail D, Exhibit 5, p. 7) and then thread the Threaded Rod into the Cross Tubes (#13 and #14, Detail D, Exhibit 5, p. 7). Next, thread Jam Nuts (#16, Detail A and Exhibit 5, p. 7) onto the Eye Rod Ends (#10, Detail A and Exhibit 5, p. 7). Then thread the Eye Rod Ends onto the end of Cross Tubes (#13 and #14, Detail D and Exhibit 5, p. 7). Adjust the Cross Tube Assembly length to the measurement written down from Step 7. Tighten all Jam Nuts.
9. Install the Cross Tube Assembly onto the scissor jacks, see Detail A and Exhibit 5, p. 7. NOTE: The STS can be installed on the same scissor jack as the Front-To-Back (FTB) but the STS will have to be installed on the outward side of the scissor jack.

This completes the installation of the Eliminator II STS.

S T S PARTS LIST

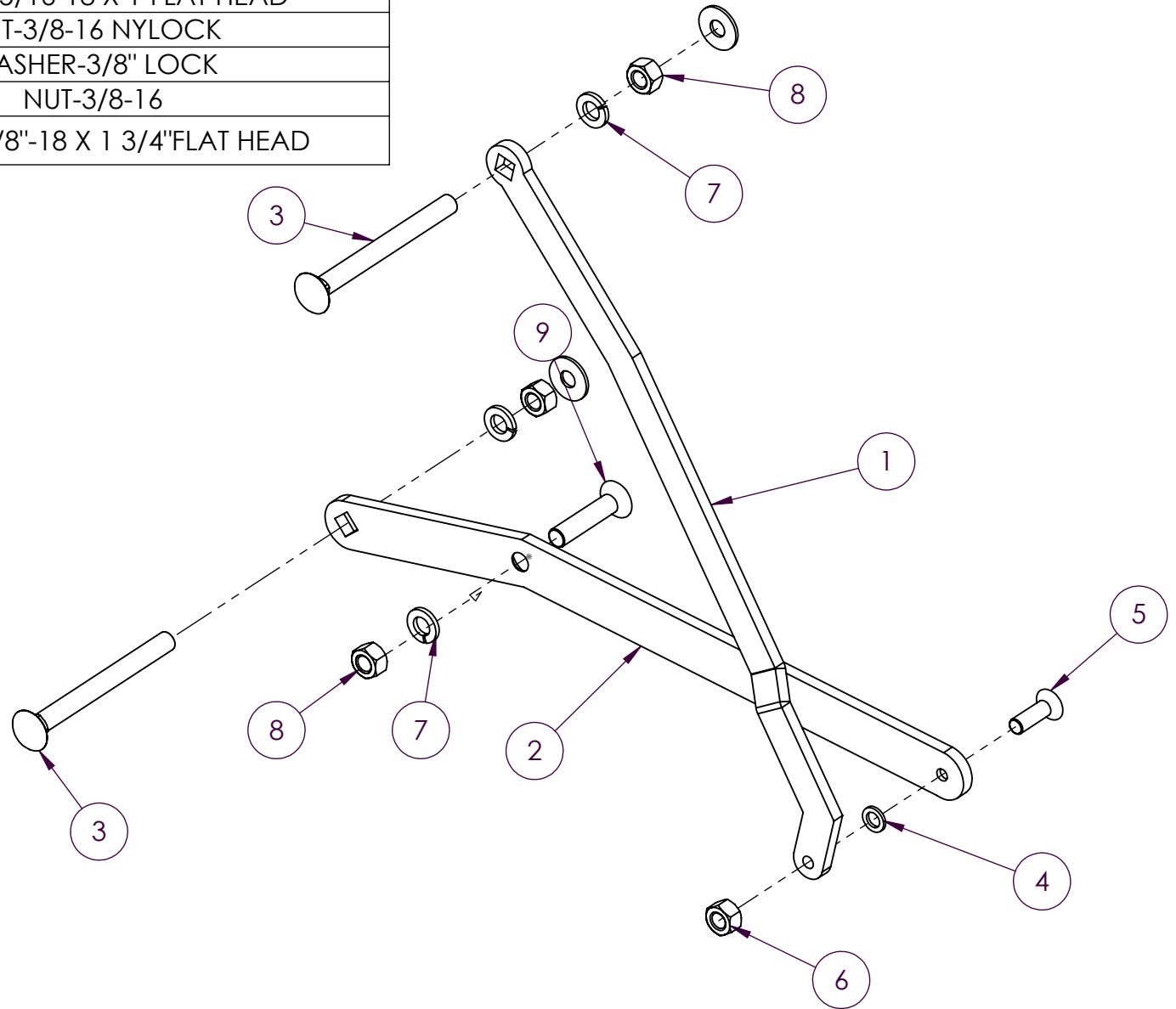
ITEM NO.	QTY.	PART NUMBER	DESCRIPTION
1	1	48-840006	LINK-OFFSET UPPER
2	1	48-840007	LINK-LOWER
3	2	48-141011	BOLT-3/8-16 x 4" CARRIAGE FULL THREAD
4	1	48-141010	WASHER-FLAT 5/16" NYLON
5	1	48-141014	SCREW-5/16-18 X 1"FLAT HEAD
6	1	21-001038	NUT 5/16-18
7	4	17-113107	WASHER-3/8" LOCK
8	4	17-113105	NUT-3/8-16
9	1	48-141015	SCREW-3/8"-18 X 1 3/4"FLAT HEAD
10	2	48-141016	EYE ROD END 3/8 X 1/2-20
11	6	39-113135	WASHER-5/16 FLAT
12	4	38-020090	NUT-3/8-16 NYLOCK
13	1	48-840008	TUBE-RT CROSS
14	1	48-840009	TUBE-LT CROSS
15	1	48-141006	ROD 16-2 MM RT & LT HAND THREADED
16	2	48-141013	NUT-1/2"-20
17	1	48-141012	BOLT 3/8-16 x 4" HEX (FULL THREAD)
18	1	48-141007	NUT-16-2 mm left hand
19	1	48-141018	NUT-16-2 mm left hand

EXHIBIT 1



ITEM NO.	PART NUMBER	QTY.	DESCRIPTION
1	48-840006	1	LINK-OFFSET UPPER
2	48-840007	1	LINK-LOWER
3	48-141011	2	BOLT-3/8-16 x 4" CARRIAGE FULL THREAD
4	48-141010	1	WASHER-FLAT 5/16" NYLON
5	48-141014	1	SCREW-5/16-18 X 1"FLAT HEAD
6	21-001038	1	NUT-3/8-16 NYLOCK
7	17-113107	3	WASHER-3/8" LOCK
8	17-113105	3	NUT-3/8-16
9	48-141015	1	SCREW-3/8"-18 X 1 3/4"FLAT HEAD

EXHIBIT 2



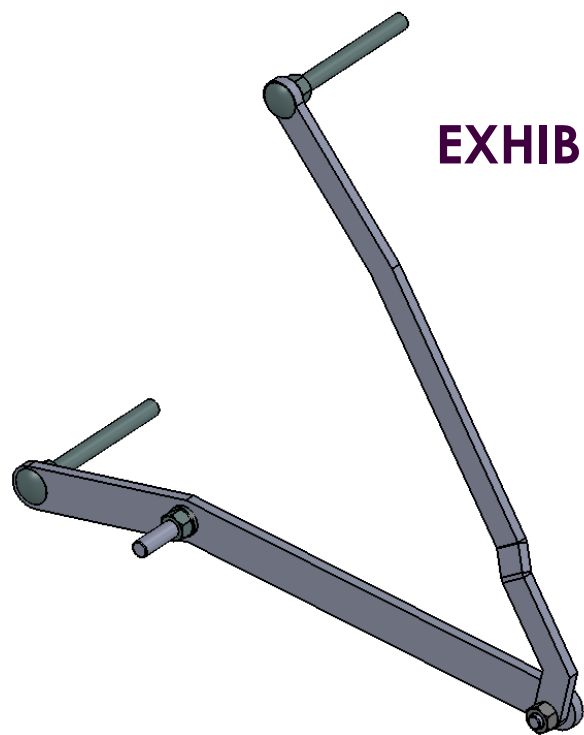
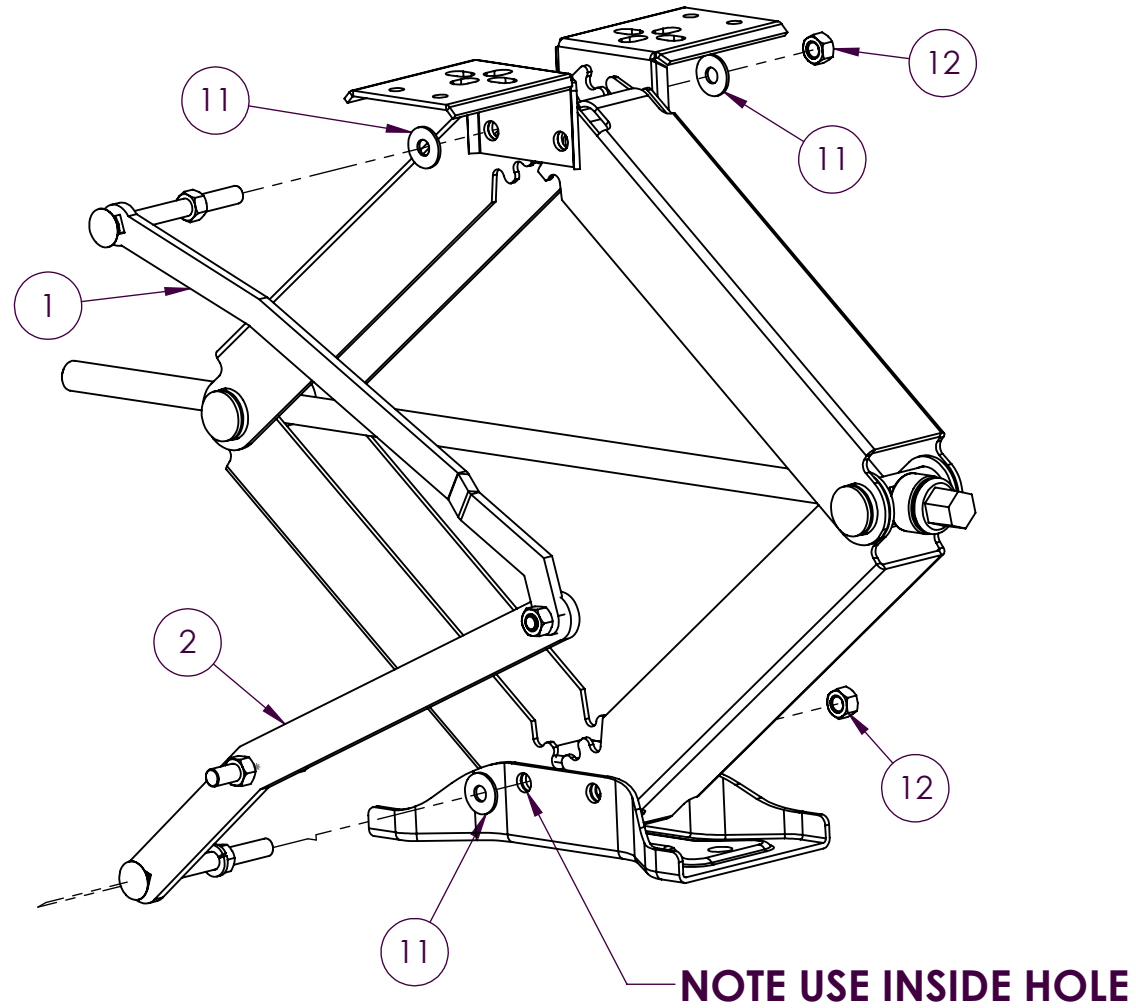


EXHIBIT 3

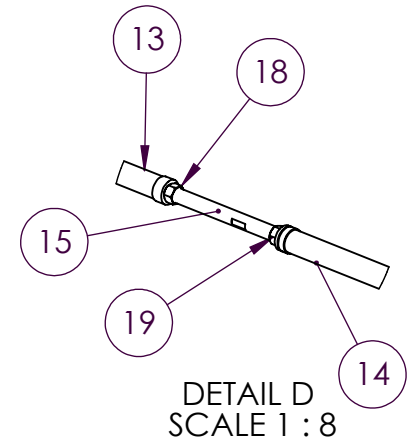
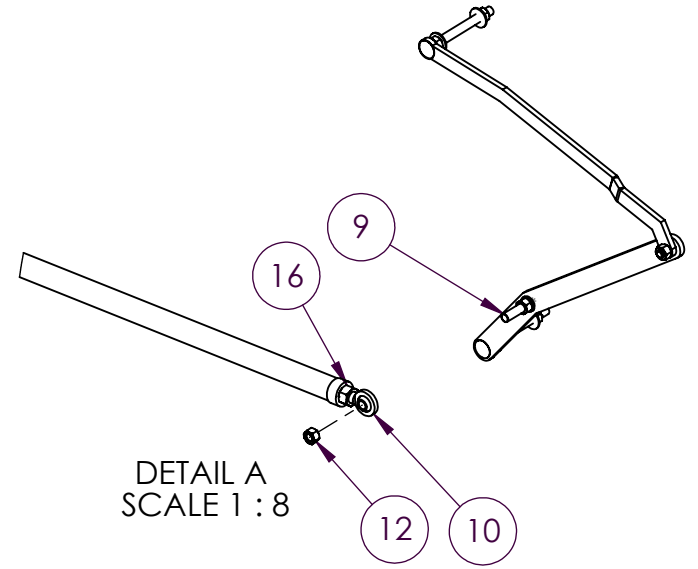
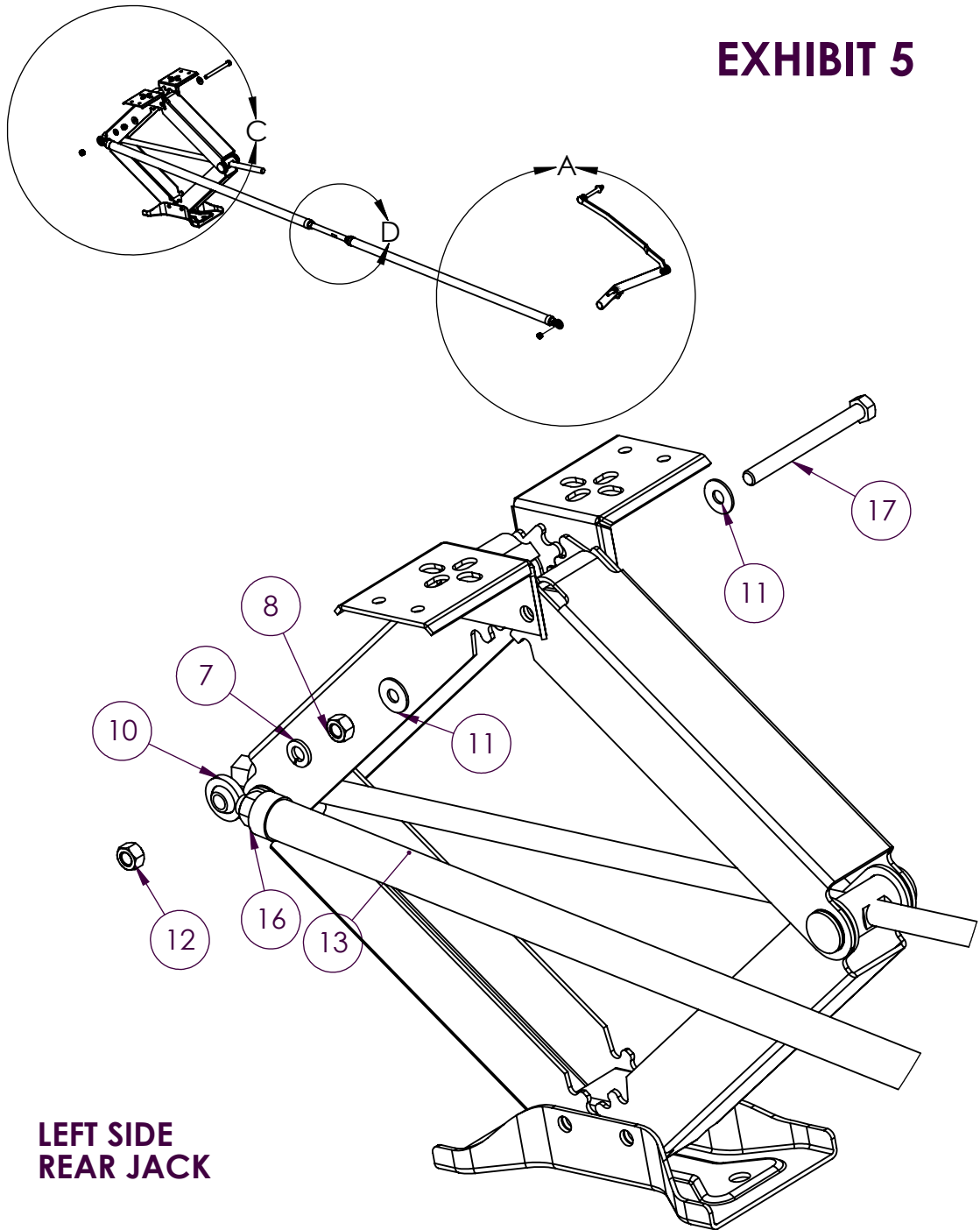
**OFFSET UPPER LINK & LOWER
LINK ASSEMBLY**

EXHIBIT 4



RIGHT SIDE REAR JACK

EXHIBIT 5



**LEFT SIDE
REAR JACK**



Ultra-Fab Products, Inc.

ONE-YEAR LIMITED WARRANTY

ELIMINATOR II STS (48-979081)

THE MANUFACTURER NAMED BELOW MAKES THE FOLLOWING WARRANTY WITH RESPECT TO THE ABOVE ULTRA-FAB PRODUCTS

1. This Warranty is made only to the first Purchaser (hereinafter called the "Original Purchaser") who acquires this product for their own use.
2. This Warranty will be in effect for one year from the date of purchase by the Original Purchaser. It is suggested that the Original Purchaser retain a copy of the dated bill of sale as proof of the date of purchase.
3. This Warranty covers only specified parts which shall be free from defects in material and workmanship under normal use. This Warranty does not cover conditions unrelated to the material and workmanship of the product. Such unrelated conditions include, but are not limited to (a) faulty installation and any damage resulting from such; (b) the need for normal maintenance and any damage resulting from the failure to provide such maintenance; (c) failure to follow Manufacturer's instructions for use of this product, and (d) any accident to, or misuse of, any part of this product and any alteration by anyone other than the Manufacturer or its authorized representative.
4. In order to obtain the benefits of this Warranty, you should return the product which you find defective to the Manufacturer named below during the period that this Warranty is in effect. All charges incurred in delivery of the product to the Manufacturer, and in picking it up after the Warranty service has been completed, must be paid by the Original Purchaser.
5. Any item returned in the manner described in paragraph 4 will be examined by the Manufacturer. If it is found that the returned item was defective in material or workmanship, the Manufacturer will repair it without charge for material and labor.
6. Ultra-Fab will pay freight on replacement parts during the first 90 days of ownership by the Original Purchaser.
7. The Manufacturer does not authorize any person or company to create any Warranty obligation or liability on their behalf.
8. IN NO EVENT SHALL THE MANUFACTURER BE LIABLE FOR INCIDENTAL OR CONSEQUENTIAL DAMAGES. SOME STATES DO NOT ALLOW THE EXCLUSION OR LIMITATION OF INCIDENTAL OR CONSEQUENTIAL DAMAGES SO THE ABOVE LIMITATION OR EXCLUSION MAY NOT APPLY TO YOU.
9. ANY IMPLIED WARRANTY, INCLUDING THE IMPLIED WARRANTY OF MERCHANTABILITY AND FITNESS FOR ANY PURPOSE, IS LIMITED TO THE DURATION OF THIS LIMITED WARRANTY. SOME STATES DO NOT ALLOW LIMITATIONS ON HOW LONG AN IMPLIED WARRANTY LASTS, SO THE ABOVE LIMITATION MAY NOT APPLY TO YOU.
10. THIS WARRANTY GIVES YOU SPECIFIC LEGAL RIGHTS, AND YOU MAY ALSO HAVE OTHER RIGHTS WHICH VARY FROM STATE TO STATE.

Ultra-Fab Products, Inc.

57985 SR 19 S., Elkhart, IN 46517

Tel: (574) 294-7571 Fax: (574) 294-4980

www.ultra-fab.com