



ELIMINATOR II FTB INSTALLATION MANUAL

(PN 48-979080)

Patent: 8,950,777 B1

The Eliminator II is an automatic stabilizer for your scissor jacks. Once it is installed there are no adjustments required for normal use of the system.

Tool List: Basic hand tools and wrenches, Allen Wrenches, Clamp, and Electric Drill

Orientation of Front-To-Back (FTB) unit:

The FTB unit is a universal fit for all four front to back corners of an RV travel trailer.

For example, Exhibit 1, p. 2, shows the rear Passenger (RT) side corner position for the installation. If there is an obstruction preventing installation, the FTB unit can be installed on one of the other corners.

Assembly:

1. Open the carton and lay out the components and check the Parts List on p. 6.
2. Assemble Frame Mount Plate (#1), Swing Plate (#2), Short Link (#3), and Long Link (#5) with the ½" x 3/8" shoulder bolts(#6), ½" nylon washers, and 3/8" -16 nuts (#9) and set aside. (See Exhibit 2, p. 3 and Parts List p. 6).
Note: Make sure the nylon washer fits over the shoulder of the shoulder bolt before tightening. A little dab of grease on the shoulder bolt will help the links pivot.
3. Assemble Short Connecting Link (#2), 5/15"-24 x ¾" Flat Head Screw (#3), and Eye Rod End (#4) per Exhibit 3, p. 4.
Note: Align the eye rod end (#4, Exhibit 3) straight up and down.
4. Remove the scissor jack foot pad bolts at the bottom of the scissor jack and install the two 3/8"-16 x3 ½" hex bolts (#16, Exhibit 4, p. 5).
Tip: If you lower the scissor jack until it stabilizes on the ground, you will be able to slide the 3/8" bolts (#16) in and out easier.
5. Install the assembled short connection link (#4, Exhibit 4, p 5) to the bottom of the scissor jack foot pad (p. 5). Do not over tighten the bolts, the scissor jack needs to pivot on the bolts to work smoothly.
6. Attach the assembled Swing Plate end (#2, Exhibit 4, p. 5) to the assembled short connecting link rod end (#10, Exhibit 4, p. 5) using the 5/16"-18 nylock nut (#8, Exhibit 4, p. 5) and 5/16"-18 x 1 ½"bolt (#7, Exhibit 4, p. 5).
7. After the FTB unit is assembled and attached to the scissor jack foot pad, fully retract the scissor jack. (Warning! If the scissor jack is not fully retracted, the FTB cannot be attached to the frame properly and could damage the FTB and/or frame.)
8. With the scissor jack in the full retract position, raise the assembled Frame Mount Plate (#1, Exhibit 4, p. 5) to the frame of the trailer and clamp in place. The Frame Mounting Plate will self-locate in the proper position if the scissor jack is fully retracted. **(Warning! If the scissor jack is not fully retracted, the FTB cannot be attached to the frame properly and could damage the FTB and/or frame.)**
9. Secure the Frame Mounting Plate to the trailer frame by drilling the TEK screws (#15, Exhibit 4, p. 5), thru the Frame Mounting Plate slot into the trailer frame. The TEK screws are self-drilling and self-tapping. NOTE: If you are installing the FTB on an RV Trailer with an I Beam frame you will want make sure you are not drilling into the center of the I Beam. If you have a tube frame or a C Channel frame you can use either the slot holes on the Frame Mounting Plate or the holes on the side of the Frame Mounting Plate (see page 5).

This completes the installation of the Eliminator II FTB.

Exhibit 1

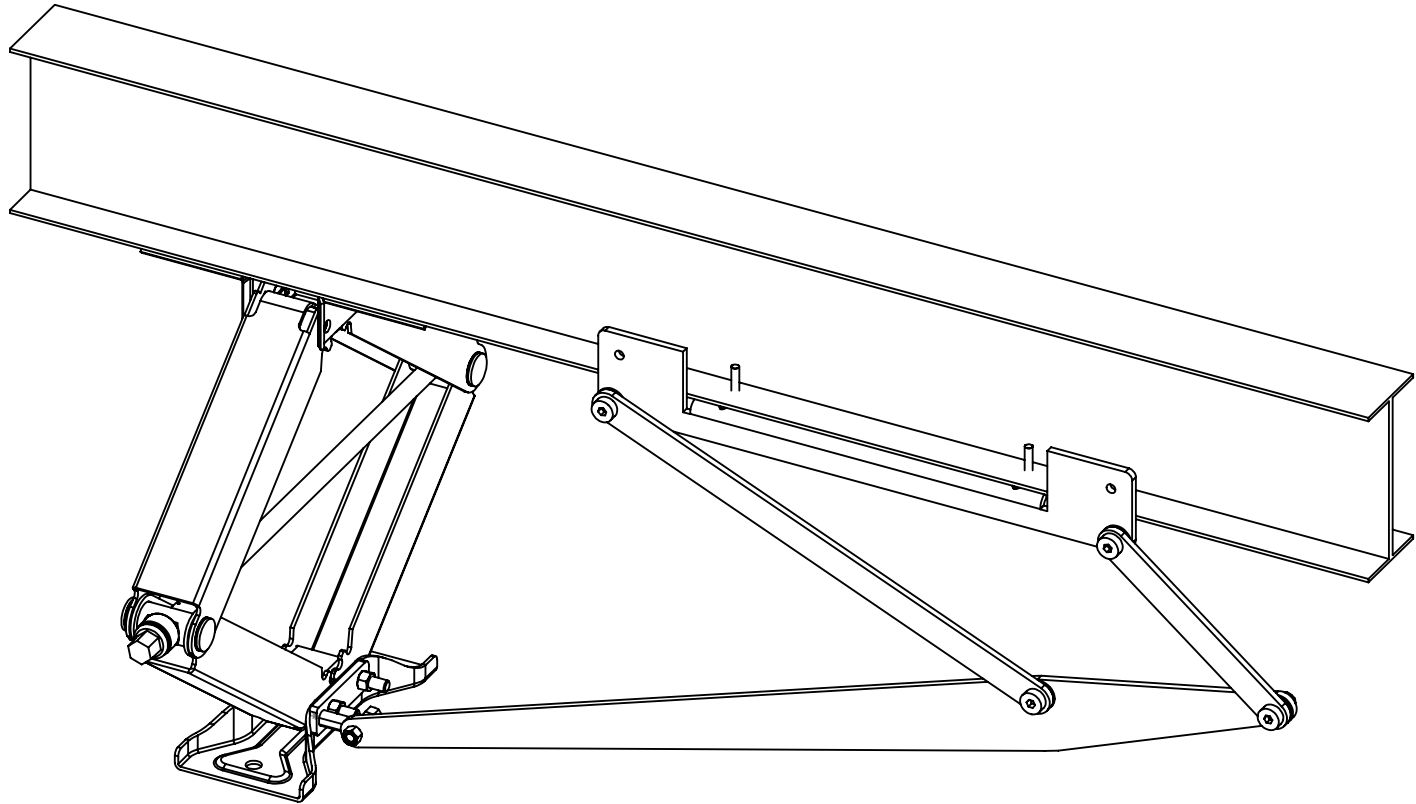
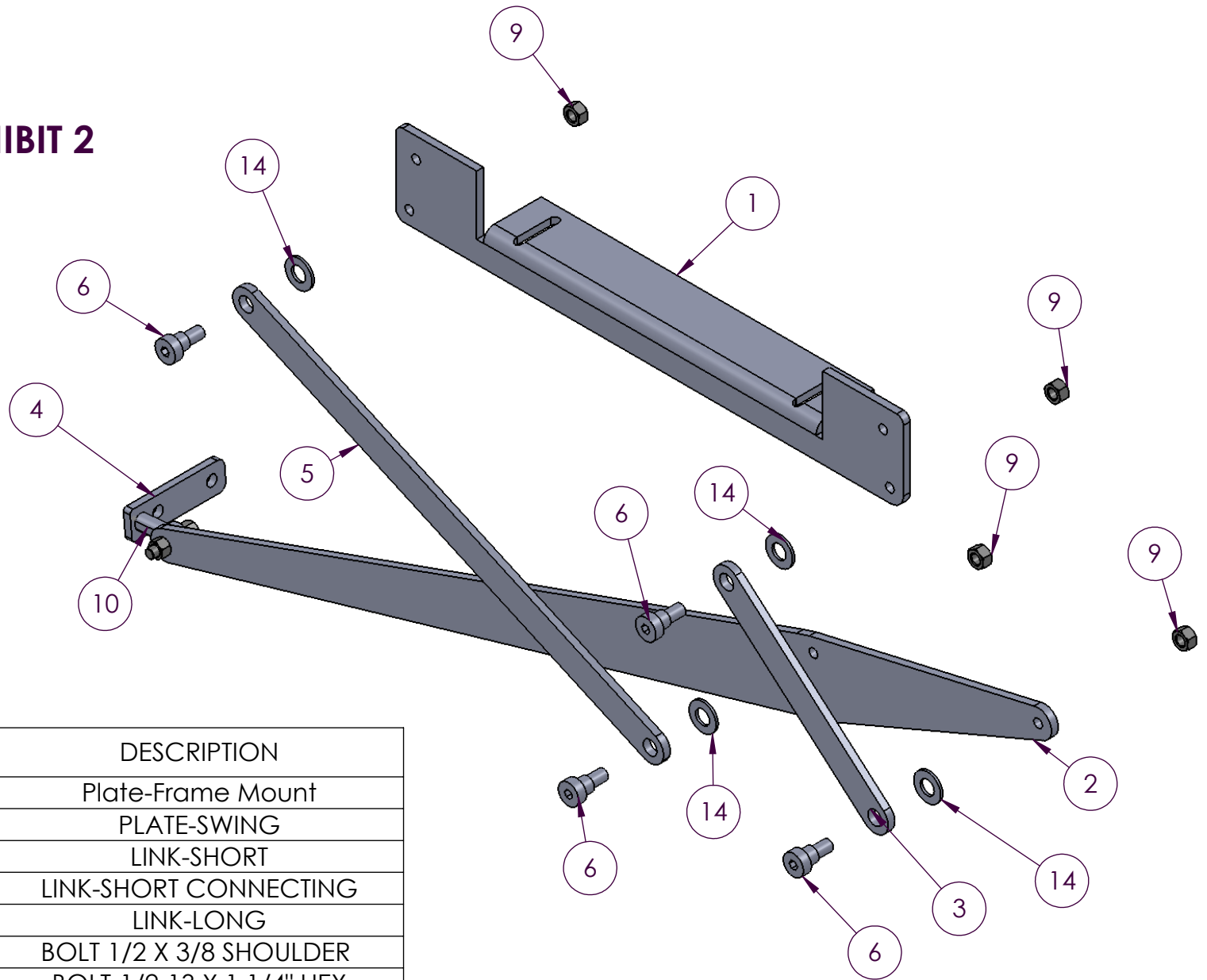
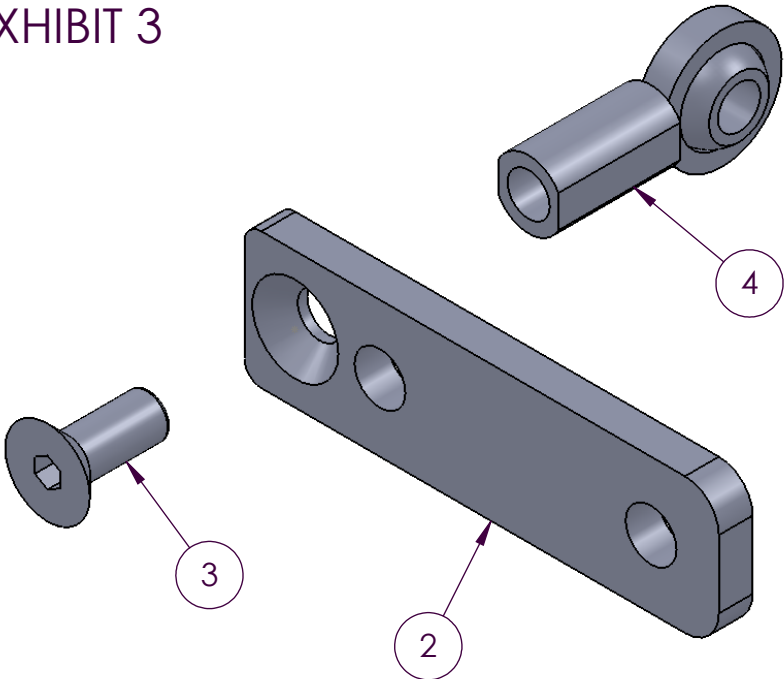


EXHIBIT 2



ITEM NO.	PART NUMBER	QTY.	DESCRIPTION
1	48-840001	1	Plate-Frame Mount
2	48-840002	1	PLATE-SWING
3	48-840003	1	LINK-SHORT
4	48-840005	1	LINK-SHORT CONNECTING
5	48-840004	1	LINK-LONG
6	48-141003	4	BOLT 1/2 X 3/8 SHOULDER
7	41-010122	1	BOLT-1/2-13 X 1 1/4" HEX
8	15-114506	1	NUT-5/16-18 NYLOCK
9	17-113105	4	NUT-3/8-16
10	48-141002	1	EYE ROD END 5/16 X 5/16-20
11	48-141001	1	SCREW-5/16-24 X 3/4"FLAT HEAD
14	48-141009	4	WASHER-FLAT 1/2" NYLON

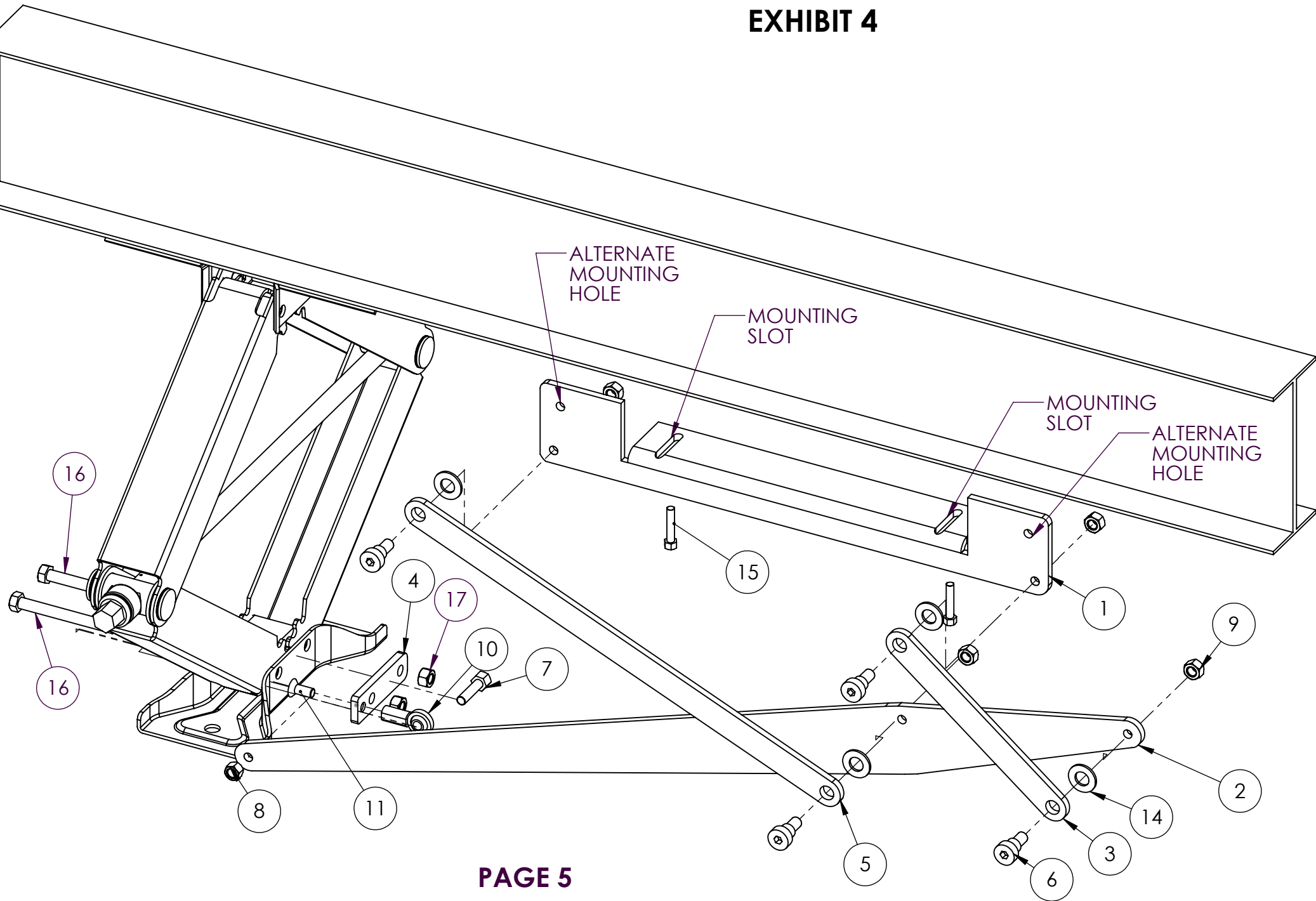
EXHIBIT 3



NOTE
TIGHTEN THE EYE ROD END
STRAIGHT UP AND DOWN

ITEM NO.	PART NUMBER	QTY.	DESCRIPTION
2	48-840005	1	LINK-SHORT CONNECTING
3	48-141001	1	SCREW-5/16-24 X 3/4"FLAT HEAD
4	48-141002	1	EYE ROD END 5/16 X 5/16-20

EXHIBIT 4



PARTS LIST

ITEM NO.	QTY.	PART NUMBER	DESCRIPTION
1	1	48-840001	Plate-Frame Mount
2	1	48-840002	PLATE-SWING
3	1	48-840003	LINK-SHORT
4	1	48-840005	LINK-SHORT CONNECTING
5	1	48-840004	LINK-LONG
6	4	48-141003	BOLT 1/2 X 3/8 SHOULDER
7	1	41-010122	BOLT-5/16-18 X 1 1/2" HEX
8	1	15-114506	NUT-5/16-18 NYLOCK
9	4	17-113105	NUT-3/8-16
10	1	48-141002	EYE ROD END 5/16 X 5/16-20
11	1	48-141001	SCREW-5/16-24 X 3/4"FLAT HEAD
14	4	48-141009	WASHER-FLAT 1/2" NYLON
15	2	48-141008	SCREW 1/4-20 X 1 1/4 TEK
16	2	48-001017	BOLT 3/8-16 x 3 1/2" HEX
17	2	38-020090	NUT-3/8-16 NYLOCK



Ultra-Fab Products, Inc.

ONE-YEAR LIMITED WARRANTY

ELIMINATOR II FTB (48-979080)

THE MANUFACTURER NAMED BELOW MAKES THE FOLLOWING WARRANTY WITH RESPECT TO THE ABOVE ULTRA-FAB PRODUCTS

1. This Warranty is made only to the first Purchaser (hereinafter called the "Original Purchaser") who acquires this product for their own use.
2. This Warranty will be in effect for one year from the date of purchase by the Original Purchaser. It is suggested that the Original Purchaser retain a copy of the dated bill of sale as proof of the date of purchase.
3. This Warranty covers only specified parts which shall be free from defects in material and workmanship under normal use. This Warranty does not cover conditions unrelated to the material and workmanship of the product. Such unrelated conditions include, but are not limited to (a) faulty installation and any damage resulting from such; (b) the need for normal maintenance and any damage resulting from the failure to provide such maintenance; (c) failure to follow Manufacturer's instructions for use of this product, and (d) any accident to, or misuse of, any part of this product and any alteration by anyone other than the Manufacturer or its authorized representative.
4. In order to obtain the benefits of this Warranty, you should return the product which you find defective to the Manufacturer named below during the period that this Warranty is in effect. All charges incurred in delivery of the product to the Manufacturer, and in picking it up after the Warranty service has been completed, must be paid by the Original Purchaser.
5. Any item returned in the manner described in paragraph 4 will be examined by the Manufacturer. If it is found that the returned item was defective in material or workmanship, the Manufacturer will repair it without charge for material and labor.
6. Ultra-Fab will pay freight on replacement parts during the first 90 days of ownership by the Original Purchaser.
7. The Manufacturer does not authorize any person or company to create any Warranty obligation or liability on their behalf.
8. IN NO EVENT SHALL THE MANUFACTURER BE LIABLE FOR INCIDENTAL OR CONSEQUENTIAL DAMAGES. SOME STATES DO NOT ALLOW THE EXCLUSION OR LIMITATION OF INCIDENTAL OR CONSEQUENTIAL DAMAGES SO THE ABOVE LIMITATION OR EXCLUSION MAY NOT APPLY TO YOU.
9. ANY IMPLIED WARRANTY, INCLUDING THE IMPLIED WARRANTY OF MERCHANTABILITY AND FITNESS FOR ANY PURPOSE, IS LIMITED TO THE DURATION OF THIS LIMITED WARRANTY. SOME STATES DO NOT ALLOW LIMITATIONS ON HOW LONG AN IMPLIED WARRANTY LASTS, SO THE ABOVE LIMITATION MAY NOT APPLY TO YOU.
10. THIS WARRANTY GIVES YOU SPECIFIC LEGAL RIGHTS, AND YOU MAY ALSO HAVE OTHER RIGHTS WHICH VARY FROM STATE TO STATE.

Ultra-Fab Products, Inc.

57985 SR 19 S., Elkhart, IN 46517

Tel: (574) 294-7571 Fax: (574) 294-4980

www.ultra-fab.com