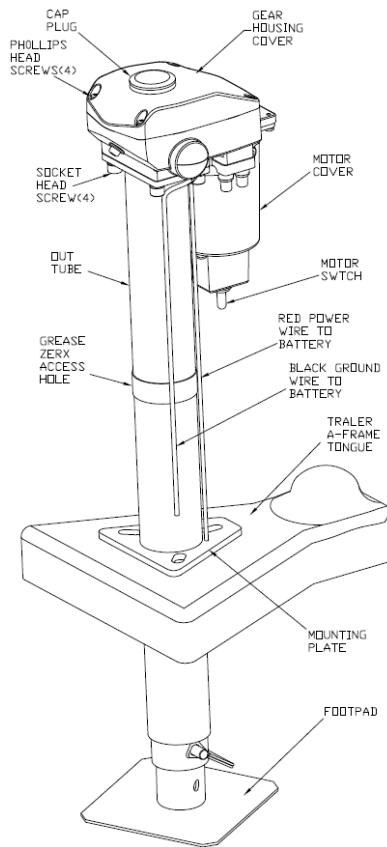




INSTALLATION/OPERATION



APPLICATION

The Ultra 3500 Electric Tongue Jack is a 12-volt motor-driven screw jack for use on travel trailers and boat trailers.

SPECIFICATIONS

Vertical Load: **3500 lbs.** continuous over full stroke with 5000 instantaneous tongue breakaway capacity.

Travel – 18"

Power Requirement -12 volt D.C.

Model # 3500 – 2¼" outer tube w/ 2" inner tube

Retracted Height - 25½"

Removable Foot Pad - 5½". (adjustable)

Approximate Shipping Weight – 22 lbs.

INSTALLATION

1. Block the wheels and support the trailer "A" frame securely.
2. Remove the existing jack.

WARNING: Failure to block the trailer wheels securely could result in personal injury and possibly death.

NOTE: Save the original nuts, bolts, and washers for installing the Ultra 3500 Electric Tongue Jack.

3. Install the Electric Tongue Jack using original nuts and bolts. Align the motor head so that the motor housing is facing the front of the "A" frame.

4. The Electric Tongue Jack was designed to replace an existing manual jack. The diameter of the outer tube of your chosen jack, will need to match the existing hole size, or you will need to modify the hole diameter to fit.
5. Connect the red positive lead to the positive terminal of the battery. Connect the black ground wire to negative terminal of the battery.

WARNING: When using an extension wire, DO-NOT use smaller than #10 gauge wire.

CAUTION: We do not recommend using the flip-up type footpad. Doing so requires the tongue jack to be altered which voids the warranty and can cause the failure of the jack.

OPERATION

1. Block trailer wheels securely at all times while operating the jack.

WARNING: Failure to block trailer wheels securely could result in personal injury and possibly death.

2. The Ultra 3500 Electric Tongue Jack is operated by means of the Toggle Switch located under the motor housing.
3. Extend the jack by holding the Toggle Switch in the Extend position.

CAUTION: The motor will stall if jack reaches the full extent of travel both in retract and extend directions. There is an over load protection for the jack to shut off power that will auto reset in 15 seconds. After using jack, operator should learn the travel limit stops. The operator should stop the jack before reaching the travel limit.

4. Retract the jack by holding the Toggle Switch in the Retract position. The jack is now fully retracted.

NOTE: If the motor should stall with the jack in the fully retracted position, and the Toggle Switch is not released, the motor will automatically switch off.

MANUAL OPERATION

1. Remove plug cap in the access hole. (located top center of the housing cover)
2. Insert the **11mm** deep well socket (included) in the access hole, over the drive spindle tang. Rotate the socket clockwise to retract and counter clockwise extend.
3. When complete, remove socket and replace plug cap.

LUBRICATION

The jack is lubricated before leaving the factory. Under normal conditions, lubrication will be needed annually.

1. Grease the Jackscrew by extending the jack until the grease fitting is aligned with the hole in the outer tube. Using a standard grease gun and standard chassis lube, give two pumps.
2. Grease the gears in gearbox.
 - A. Remove the gear cover via 4 Phillips screws.
 - B. Grease the gears with chassis lube and reinstall cover.

STORAGE

A hook and loop strap has been included to help store the wire/connector to the jack when not use.



57985 State Road 19, South
Elkhart, Indiana 46517
PH: (800) 860-7571
FX: (800) 860-4880
www.ultra-fab.com

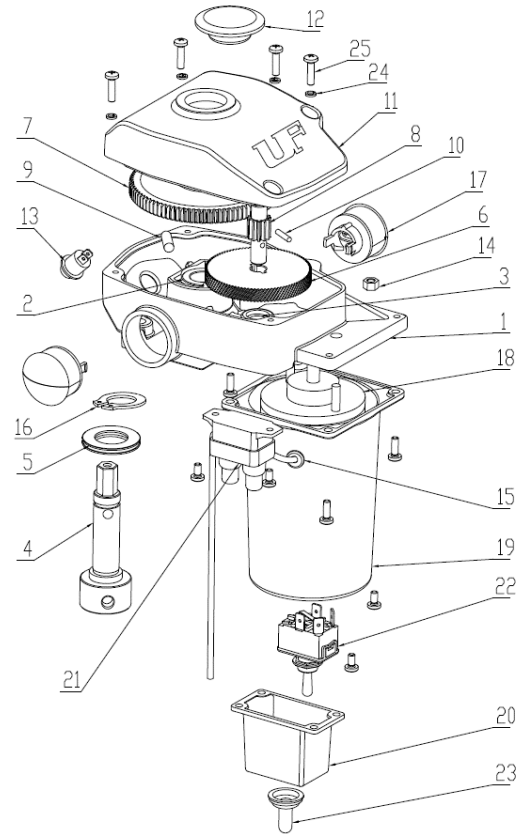
ULTRA 3502 ELECTRIC TONGUE JACK

P/N 38-944017 PATENT PENDING

C.

MOTOR EXPLODED VIEW

No.	Part No.	Description	Q'ty
1	38-760001	GEAR HOUSING BASE	1
2	38-760002	BUSHING 16	1
3	38-760003	BUSHING 9.5	2
4	38-760004	COLLAR HEX HEAD	1
5	38-760005	THURST BEARING	1
6	38-760006	SPUR GEAR	1
7	38-760007	MAIN GEAR	1
8	38-760008	PINION GEAR 12T	1
9	38-760009	PIN 6X18	1
10	38-760010	PIN 3X14	1
11	38-760011	GEAR HOUSING COVER	1
12	38-760012	RUBBER PLUG	1
13	38-760013	LIGHT SWITCH	1
14	38-751152	M5	2
15	38-760015	GROMMET	1
16	38-760016	SNAP RING	1
17	38-760017	LIGHT	2
18	38-760018	MOTOR	1
19	38-760019	MOTOR HOUSING	1
20	38-760020	SWITCH HOUSING	1
21	38-760021	CIRCUIT BREAKER	1
22	38-760022	MOTOR SWITCH	1
23	38-760023	SWITCH BOOT	1
24	38-760024	LOCK WASHER M4.1	4
25	38-751010	SCREW M4X12	14
	NOT SHOWN		
	38-760025	SOCKET 11MM DEEP WELL MANUAL OVERRIDE	1



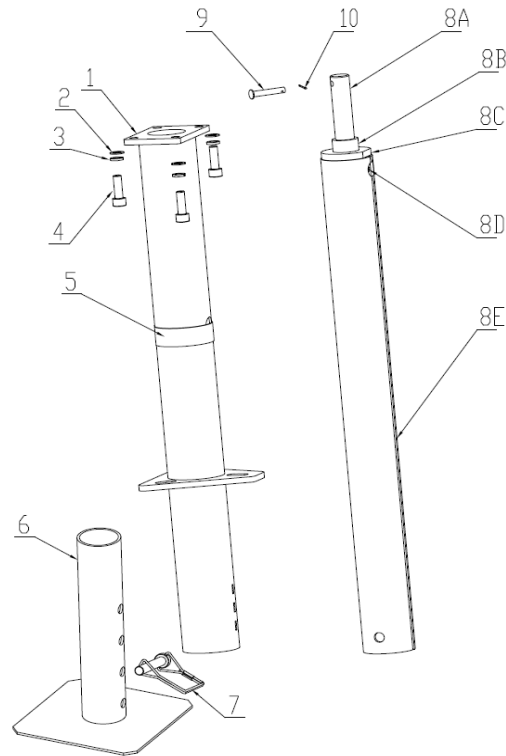


57985 State Road 19, South
 Elkhart, Indiana 46517
 PH: (800) 860-7571
 FX: (800) 860-4880
 www.ultra-fab.com

ULTRA 3500 ELECTRIC TONGUE JACK
P/N 38-944060
 US PATENT 9,821,774 B1

LOWER STEM ASSEMBLY EXPLODED VIEW

No.	Part No.	Description	Q'ty
1	38-760101	TUBE OUTER 2.25"	1
2	38-114452	SERRATED WASHER 8	4
3	38-760103	WASHER M8	4
4	38-760104	BOLT M8x25	4
5	38-760105	RUBBER BAND	1
6	38-760106	FOOTPAD STD 2.25"	1
7	38-141023	WIRE LOCK PIN	1
8(A-E)	38-760108	TUBE INNER 2" ASSY	1
8A	38-760004	COLLAR HEX HEAD	1
8B	38-760109	RETAINING PIN	1
8C	38-760005	THRUST BEARING	1
8D	17-753230	GREASE ZERK 6-1.0mm	1
8E	38-760110	TUBE INNER 2"	1
9	38-751127	UPPER PIN	1
10	38-760111	COTTER PIN	1



NOT SHOWN:

38-760112 LOWER STEM ASSEMBLY (INCLUDES 38-760101 AND 38-760108)



57985 State Road 19, South
Elkhart, Indiana 46517
PH: (800) 860-7571
FX: (800) 860-4880
www.ultra-fab.com

ULTRA 3500 ELECTRIC TONGUE JACK
P/N 38-944060
US PATENT 9,821,774 B1

WIRING DIAGRAM

